

# Kaye Mahoney

## TELEGRAMS FROM EARTH IN CRISIS

02 - 26 . 06 . 2025

This exhibition features works about the real and present danger of the climate crisis that includes a selection from a series of prints called **2020 Telegrams** [10 – 20 prints out of 100], and a mixed media work titled **Top of the World When the Last Iceberg Melts**.

In 2020, Mahoney created a large array of prints called “**2020 Telegrams**” (one hundred in total) utilising watercolour, text, masking tape and digital processing. This show presents a few of these prints.

As with telegrams used in the 20th century, Mahoney’s “2020 Telegram” were messages to be urgently delivered and received. They were often confronting. The process of reception was crucial. They are completed by the recipient who is compelled to “read” the dissonance between image and words – words that may be couched in irony, humour, sarcasm, wordplay, rhetoric or outright naming calling. Some may find parallels between the imagery and the critical implications of the text. Others may temperamentally respond, as if to a call to action. Yet, such associations may be co-incidental. For Mahoney, **2020 Telegrams** reflect the struggle to rationalise how comfort, beauty and privilege can co-exist alongside

In speaking about the 2020 Telegrams, Deborah Snow (award winning senior journalist for the Sydney Morning Herald and the Age) said:

*“As I said, I’m a journalist, have been for 40 years. I deal daily with the tide of events, crises, issues... You can blunt yourself to the impact of that. But truly thought-provoking art can bring you back to a place where you re-evaluate yourself and how you stand in relation to the world, what you can do, the discussions you can have, in my case the things I can write...”*

*There is the growing drumbeat of anxiety about climate change, bringing with it knowledge that we all hold in our bones: that we cannot separate human welfare from the wellbeing of the natural world, the seas, the air, the forests, the creatures that co-exist with us.”*

inequality, destruction, corruption, exploitation and the collective trauma of a world in environmental crisis.



# “At the Top of the World When the Last Iceberg Melts”

“At the Top of the World When the Last Iceberg Melts” maps what the arctic pole might look like in the future if mankind continues its trajectory of neglecting the global warming crisis.

A series of drawings (on single use plastic) populate a bereft tropical, desertified planet – the polar cap has melted from a large mass into one last iceberg. Lines reflecting weather data are embedded in some of the drawings. For comparison the size of the arctic mass today is drawn on a burnt out thermometer dangling at the bottom corner of the map. Images are fixed with magnets – as if on a fridge – reflecting a vain hope that we still have agency and can remove these scenarios if we can change our track.

Floods on a biblical level, fire and earthquakes and plaguing Australia. **Climate catastrophes, poisoned soil, inequality, extinction, killing, floods on a biblical level, infernos on an epic scale and earthquakes:** these are predictable consequences of global warming, capitalist exploitation and wars.

## 2025 May Be The Second Hottest Year On Record, Just Behind 2024

***Ice coverage is shrinking** – south of Australia , in the Antarctic the ice coverage is the lowest level since satellite records began. Loss of sea ice coverage is a worry because ice helps reflect heat.*

***Oceans are warming too** - average sea surface temperature keeps on getting warmer. **Its getting hotter on land too** - global temperature records are being broken.*

***Carbon dioxide is still increasing** - CO2 emission levels show that global efforts to reduce emissions are failing.*

***The Atlantic Meridional Overturning Circulation** (including the Atlantic Gulfstream) is collapsing – With increasing contributions of freshwater from melting glaciers and greater rain, concentrations of salt in the sea water drop, and the saline water becomes less dense, disrupting the sinking process and weakening the entire physical cycle. The temperature, sea level and precipitation changes will severely affect society, and the climate shifts are unstoppable on human time scales. The resulting chain of reactions will severely impact entire ecosystem and global food security.*

# Kaye Mahoney

Kaye Mahoney is a Thai born Australian American conceptual artist. Her wide-ranging expressive tools include video, installations, painting, text, assemblage and music. Many of her works are conceived as platforms for experimentation and interaction or reflect the influence of 1960's Fluxus movement. In her early years, after completing an MFA program at the New York Academy of Art, Mahoney trained in Italy and practiced as a muralist specializing in fresco. Mid-career, she was represented by Dillon Gallery in Chelsea New York and exhibited regularly in France and Italy. Since moving to Australia, Mahoney's shows have included a major solo exhibitions at the Goulburn Regional Art Gallery, solo exhibitions in Sydney at Art Atrium and a show at Lesley Heller Gallery, New York. Mahoney maintains studios in Sydney and France and is represented by Art Atrium and Art Atrium 48. Her work has been reviewed in Italy (Corriere di Sienna/ La Repubblica Delle Donne), United States (Miami/Newark Star Ledger), Australia (Canberra Times/ Art in Australia/ Midland Express/ Goulburn Post).

To find out more about the artist please visit: <https://artatrium.com.au/48/kaye-mahoney>

## ARTIST SUPPORT

Donate 50% of sales proceeds to Greenpeace: <https://www.greenpeace.org.au/>

## CONTACT

[art.intelligentanimal@gmail.com](mailto:art.intelligentanimal@gmail.com)

intelligent animal acknowledges First Nations peoples from Gadigal country as the sovereign custodians of Country, and pay respect to Elders of past, present and future generations. We acknowledge and value the culture, customs and practices present in the diverse tribal nations across NSW

intelligent animal and the Darlington Installation Project (DIP) present Kaye Mahoney: TELEGRAMS FROM EARTH IN CRISIS  
[intelligentanimal.com.au](http://intelligentanimal.com.au) #intelligentanimal

## ARTWORKS

At the Top of the World When the Last Iceberg Melts

Mixed media: oil on canvas, single use plastic, ink, magnets ready made eroded thermometer, wire

Dimensions: 115cm x 153 cm

Price:\$6,000

Image detail courtesy of the artist.





Telegram #1  
Mining profits by blowing up sacred sites

Archival pigment print on Ilford textured cotton rag, 310 gsm  
derived from a combination of watercolour, gouache and collage

Dimensions: 60 cm x 45 cm  
\$400



Telegram #4  
Alleluia when the last iceberg melts

Archival pigment print on Ilford textured cotton rag, 310 gsm  
derived from a combination of watercolour, gouache and collage

Dimensions: 60 cm x 45 cm  
\$400



Telegram #11  
Hordes of mosquitoes are a hint of the future

Archival pigment print on Ilford textured cotton rag, 310 gsm  
derived from a combination of watercolour, gouache and collage

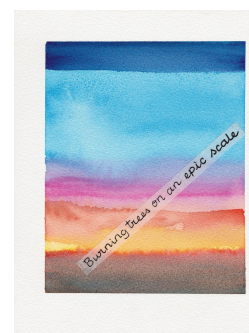
Dimensions: 60 cm x 45 cm  
\$400



Telegram #12  
Burning trees on an epic scale

Archival pigment print on Ilford textured cotton rag, 310 gsm  
derived from a combination of watercolour, gouache and collage

Dimensions: 60 cm x 45 cm  
\$400



Telegram #15  
One million species are at risk of extinction

Archival pigment print on Ilford textured cotton rag, 310 gsm  
derived from a combination of watercolour, gouache and collage

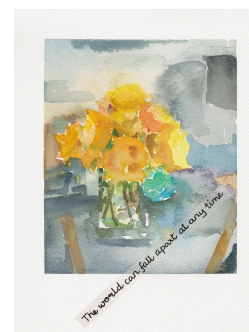
Dimensions: 60 cm x 45 cm  
\$400



Telegram #16  
The world can fall apart at any time

Archival pigment print on Ilford textured cotton rag, 310 gsm  
derived from a combination of watercolour, gouache and collage

Dimensions: 60 cm x 45 cm  
\$400



Telegram #20  
Zoonotic spillover

Archival pigment print on Ilford textured cotton rag, 310 gsm  
derived from a combination of watercolour, gouache and collage

Dimensions: 60 cm x 45 cm  
\$400

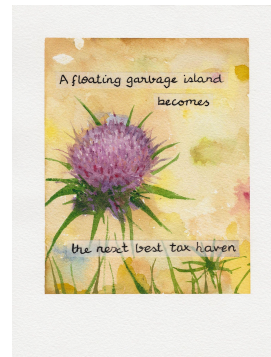


Telegram #29

A floating garbage island becomes the next best tax haven

Archival pigment print on Ilford textured cotton rag, 310 gsm  
derived from a combination of watercolour, gouache and collage

Dimensions: 60 cm x 45 cm  
\$400



Telegram #31  
Pipelines to destruction

Archival pigment print on Ilford textured cotton rag, 310 gsm  
derived from a combination of watercolour, gouache and collage

Dimensions: 60 cm x 45 cm  
\$400

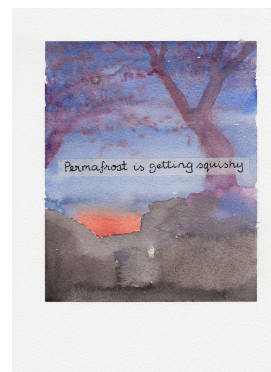


Telegram #43

Permafrost is getting squishy

Archival pigment print on Ilford textured cotton rag, 310 gsm  
derived from a combination of watercolour, gouache and collage

Dimensions: 60 cm x 45 cm  
\$400



Telegram #45  
Coal fired power fuelling premature death

Archival pigment print on Ilford textured cotton rag, 310 gsm  
derived from a combination of watercolour, gouache and collage

Dimensions: 60 cm x 45 cm  
\$400



Telegram #51

It's raining plastic

Archival pigment print on Ilford textured cotton rag, 310 gsm  
derived from a combination of watercolour, gouache and collage

Dimensions: 60 cm x 45 cm  
\$400



Telegram #63  
Running out of unpoisoned soil

Archival pigment print on Ilford textured cotton rag, 310 gsm  
derived from a combination of watercolour, gouache and  
collage

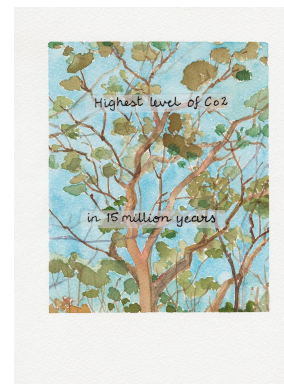
Dimensions: 60 cm x 45 cm  
\$400



Telegram #65  
Highest level of CO2 in 15 million years

Archival pigment print on Ilford textured cotton rag, 310 gsm  
derived from a combination of watercolour, gouache and collage

Dimensions: 60 cm x 45 cm  
\$400



Telegram #67  
Record temperatures in Death Valley

Archival pigment print on Ilford textured cotton rag, 310 gsm  
derived from a combination of watercolour, gouache and  
collage

Dimensions: 60 cm x 45 cm  
\$400



Telegram #87  
Weaponising beliefs

Archival pigment print on Ilford textured cotton rag, 310 gsm  
derived from a combination of watercolour, gouache and collage

Dimensions: 60 cm x 45 cm  
\$400



Telegram #93  
Positive Test

Archival pigment print on Ilford textured cotton rag, 310 gsm  
derived from a combination of watercolour, gouache and  
collage

Dimensions: 60 cm x 45 cm  
\$400



Telegram #97  
Ballistic garbage in outer space

Archival pigment print on Ilford textured cotton rag, 310 gsm  
derived from a combination of watercolour, gouache and collage

Dimensions: 60 cm x 45 cm  
\$400

